

2.5

Overview of AHRI Risk Assessment Studies for A2L Refrigerants

Xudong Wang and Karim Amrane
Air-Conditioning, Heating, and Refrigeration Institute (AHRI)



we make life better™

Overview

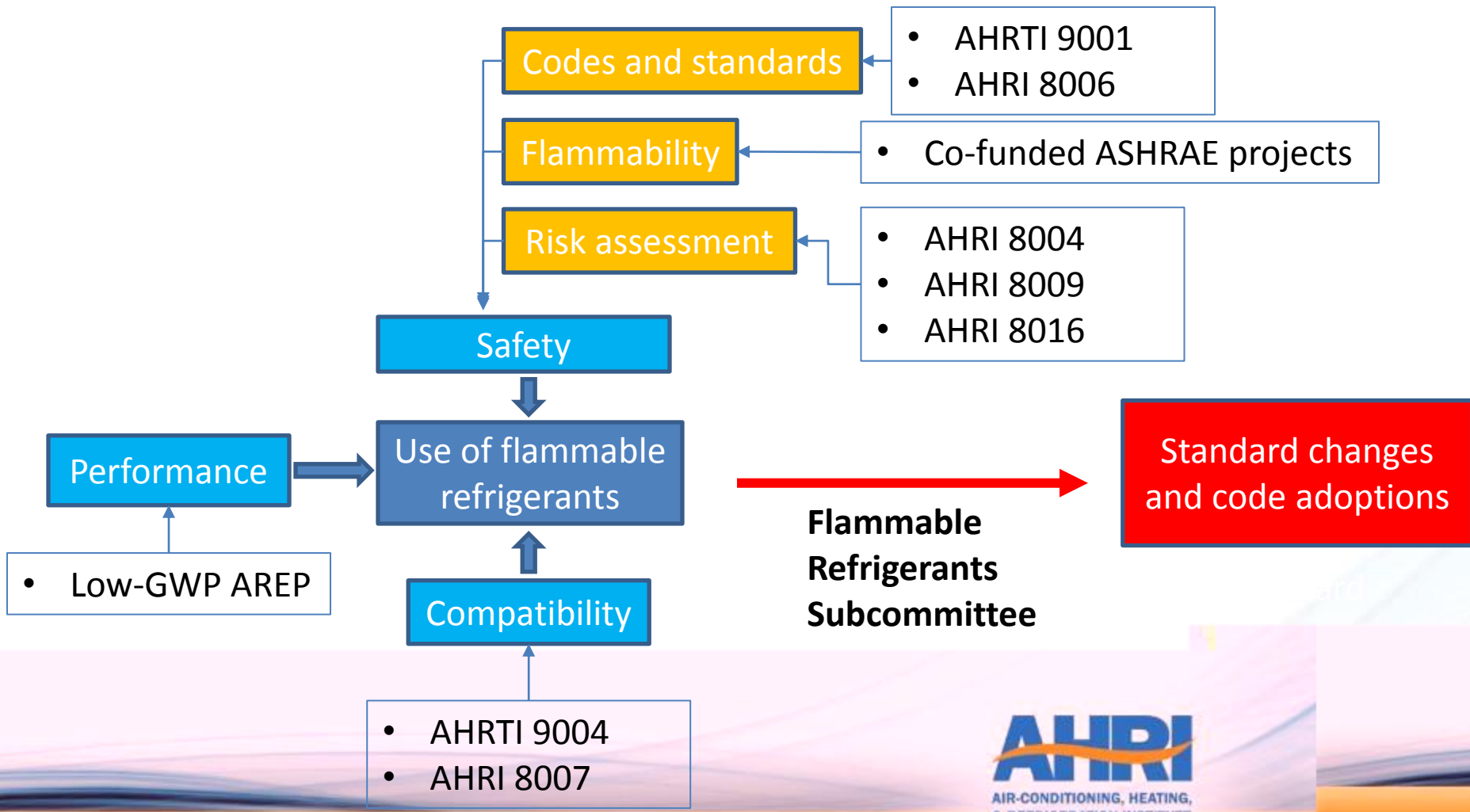
- **Introduction**
- **Equipment type**
- **Methodology**
- **Results**
- **Conclusions**



AIR-CONDITIONING, HEATING,
& REFRIGERATION INSTITUTE

we make life better™

AHRI Research Activities on Flammable Refrigerants



Introduction

➤ Risk assessment completed/ongoing:

- Residential heat pumps
- Commercial refrigeration products
- Rooftop units

➤ Refrigerants

- R-32
- R-1234yf
- R-1234ze

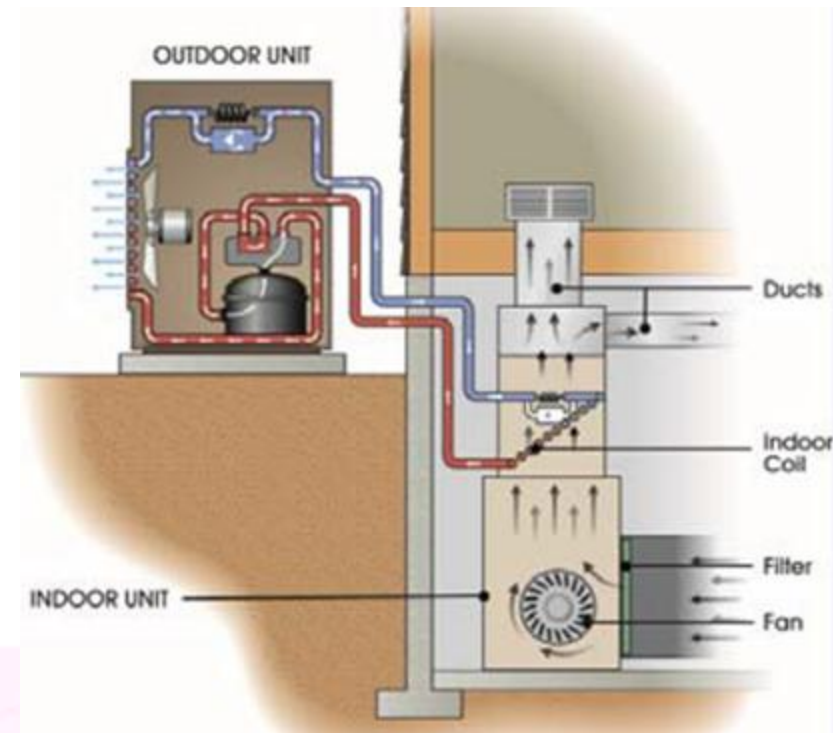


we make life better™

Equipment

- **Residential heat pumps**
 - ducted split heat pumps

Outdoor Unit	Indoor Unit (with blower on/off)
Outside	Basement
	Garage
	Attic
	Utility closet

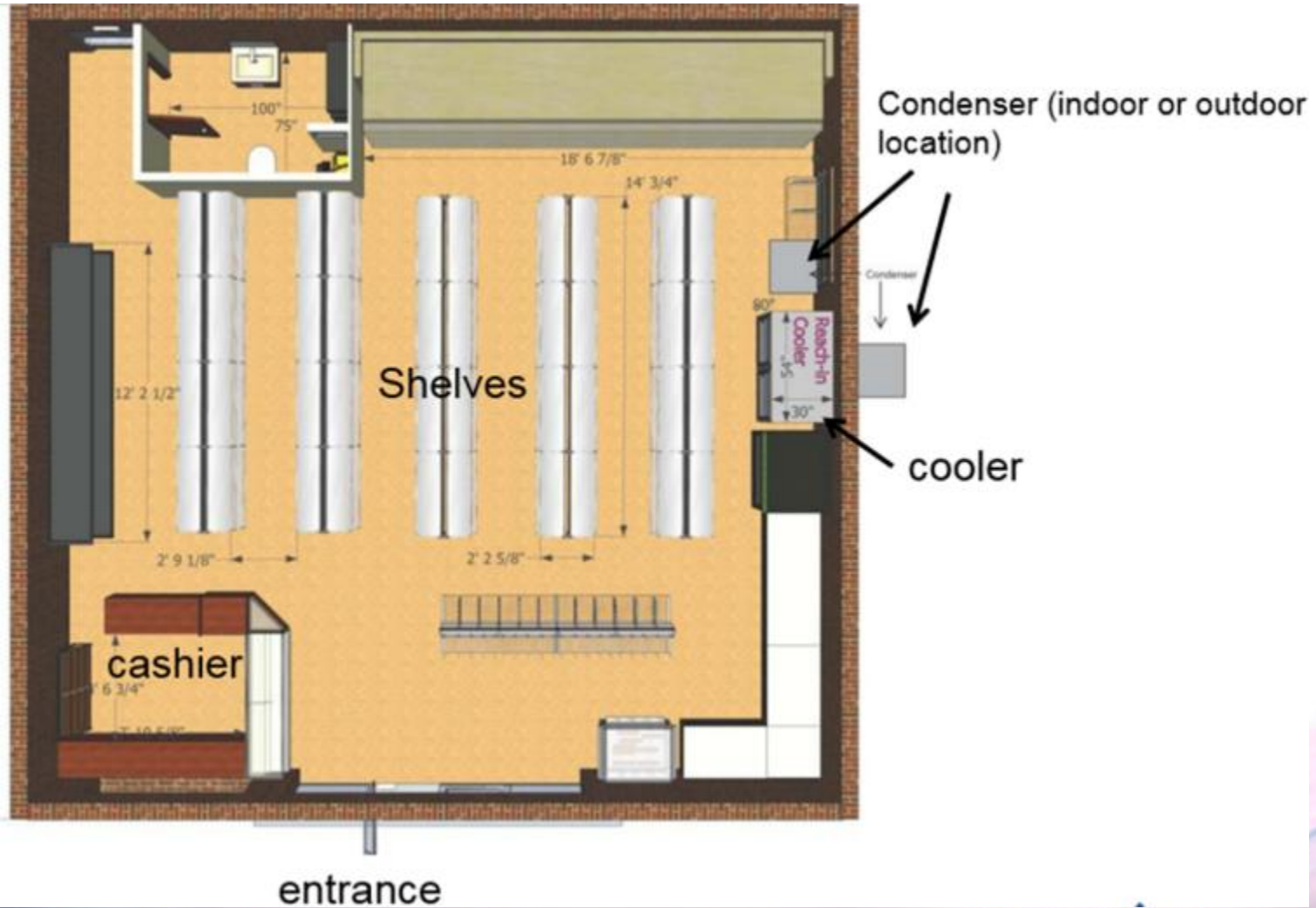


Equipment

➤ Commercial refrigeration product

Leak Type/Equipment	Location
Large (rupture) and small (corrosion-induced) leaks in a self-contained reach-in cooler located in:	A convenience store. A kitchen in a small restaurant. A lunch counter.
Large (rupture) and small (corrosion-induced) leaks in a self-contained walk-in cooler located in:	A convenience store. A kitchen in a small restaurant.
Large (rupture) and small (corrosion-induced) leaks in a single condensing unit located outdoors and connected to:	A walk-in cooler in a convenience store. A walk-in cooler associated with a kitchen in a small restaurant.

Convenience Store



AIR-CONDITIONING, HEATING,
& REFRIGERATION INSTITUTE

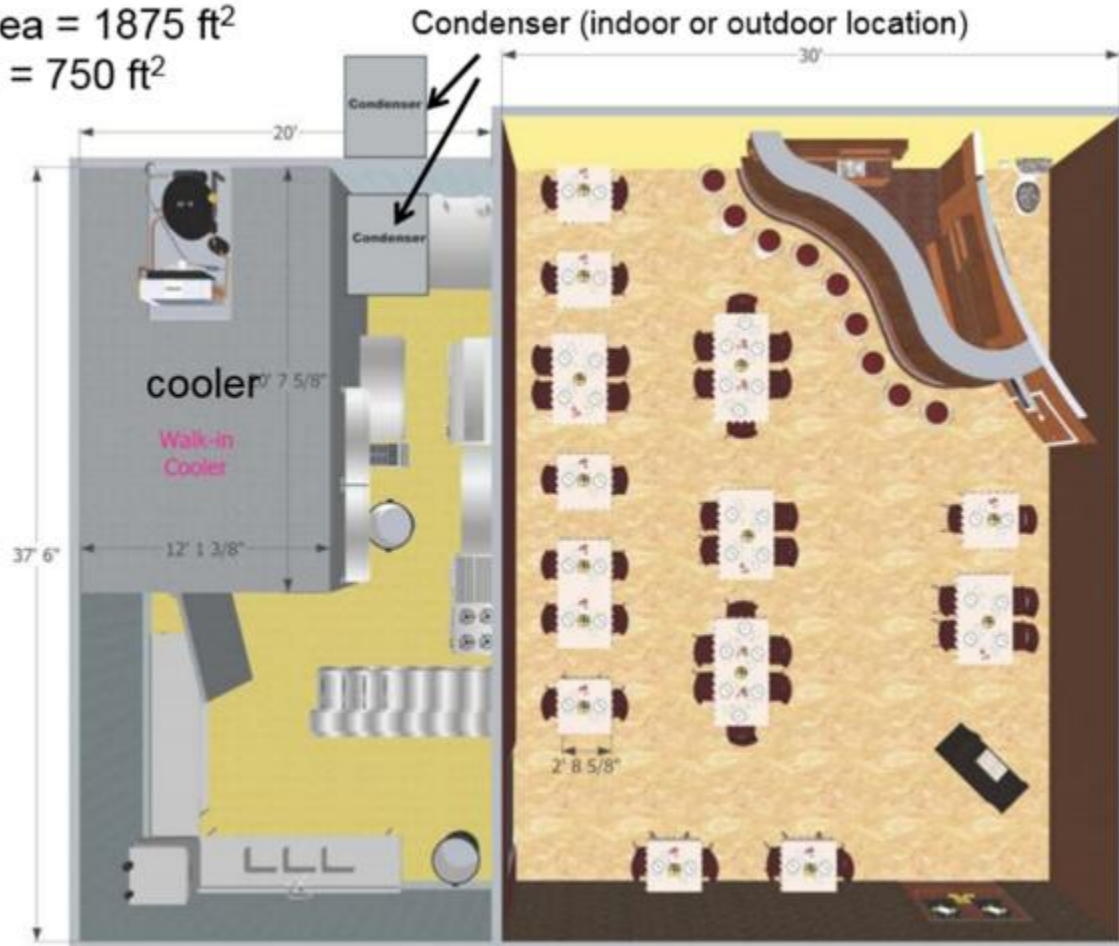
we make life better™

Small Restaurant/Lunch Counter



Commercial Kitchen

Total Area = 1875 ft²
Kitchen = 750 ft²

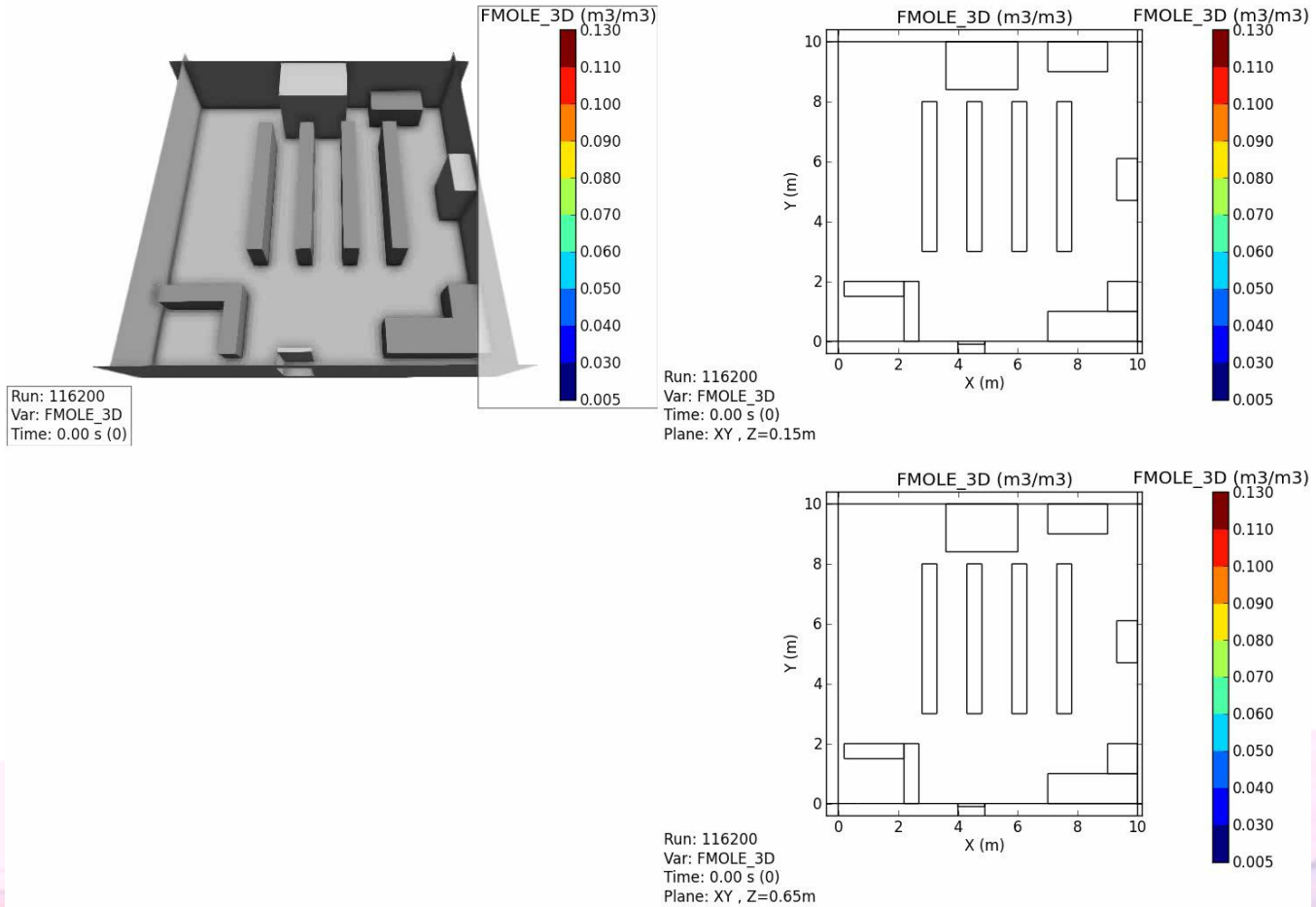


entrance

AIR-CONDITIONING, HEATING,
& REFRIGERATION INSTITUTE

we make life better™

CFD Simulation



AIR-CONDITIONING, HEATING,
& REFRIGERATION INSTITUTE

we make life better™

CFD Results

Table 3.4 Summary of Results of CFD Modeling for R-32

Scenario (Leak Rate)	Time LFL Exceeded (s)	Maximum Conc. at Monitoring Points (%)	Time LFL Exceeded (s)	Comment
Basic Scenarios				
Restaurant Kitchen	0	3.32	0	Concentrations well below the LFL in all locations.
Lunch Counter	0	0.41	0	Concentrations well below the LFL in all locations.
Convenience Store	0	0.63	0	Concentrations well below the LFL in all locations.
Exploratory Scenarios				
Restaurant Kitchen (Walk-in Cooler Door Closed)	0	7.12	0	Concentrations well below the LFL in all locations.



we make life better™

CFD Results

Table 3.5 Summary of Results of CFD Modeling for R-1234ze(E)

Scenario (Leak Rate)	Time LFL Exceeded (s)	Maximum Conc. at Monitoring Points (%)	Time LFL Exceeded (s)	Comment
Basic Scenarios				
Restaurant Kitchen	0	1.43	0	Concentrations well below the LFL in all locations.
Lunch Counter	0	0.31	0	Concentrations well below the LFL in all locations.
Convenience Store	0	0.30	0	Concentrations well below the LFL in all locations.
Exploratory Scenarios				
Restaurant Kitchen (Walk-in Cooler Door Closed)	0	3.38	0	Concentrations well below the LFL in all locations.

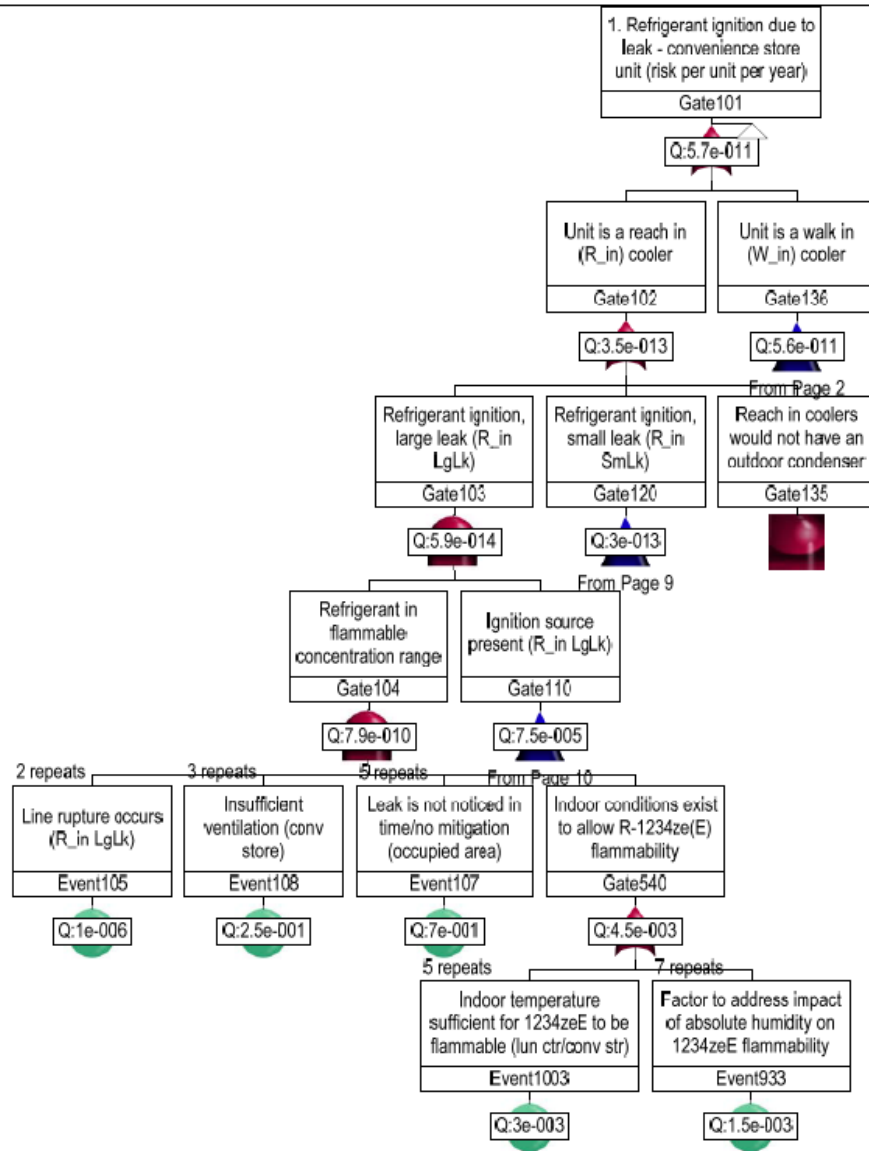
Experimental Study/Concentration Measurements



**AIR-CONDITIONING, HEATING,
& REFRIGERATION INSTITUTE**

we make life better™

Fault Tree Analysis



FTA Results

Table 4.1 Results of FTA

Scenario	Fault Tree	Risk of Refrigerant Ignition (Events per Unit per Year)		
		R-32	R-1234ze(E)	R-1234yf
Convenience Store Scenario	1	1×10^{-9}	6×10^{-11}	2×10^{-10}
Inside event ⁽¹⁾				
Reach-in		8×10^{-11}	4×10^{-13}	8×10^{-11}
Walk-in		6×10^{-11}	3×10^{-13}	6×10^{-11}
Outside event ⁽²⁾		1×10^{-9}	6×10^{-11}	6×10^{-11}
Lunch Counter Scenario ⁽³⁾	2	2×10^{-10}	7×10^{-13}	2×10^{-10}
Restaurant Kitchen Scenario	3	3×10^{-9}	3×10^{-10}	2×10^{-9}
Inside event				
Reach-in		6×10^{-10}	2×10^{-10}	6×10^{-10}
Walk-in		9×10^{-10}	4×10^{-10}	9×10^{-10}
Outside event		1×10^{-9}	6×10^{-11}	6×10^{-11}
Repair Scenario	R	1×10^{-11}	2×10^{-13}	4×10^{-12}

Ongoing project

➤ Rooftop Unit

Equipment Types	Building Types	Conditions
25T Roof Mount	Office	The FTA will assess risk under the following three conditions: <ol style="list-style-type: none">1. Installation2. Servicing3. Operation
5T Ground Mount		
15T Roof Mount	Commercial Kitchen	

Thank you for your attention!



Xudong Wang
xwang@ahrinet.org
Tel: 703-600-0305

AHRI
AIR-CONDITIONING, HEATING,
& REFRIGERATION INSTITUTE
we make life better™